

Adaptation Scotland

supporting climate change resilience

Community Climate Adaptation Routemap

DTAS Annual Conference 2025



Scottish Government
Riaghaltas na h-Alba
gov.scot

The Adaptation Scotland programme is funded by the Scottish Government and delivered by Scottish charity Venture

venture



About us

Verture is a Scottish charity that helps everyone, in every place, thrive as our climate changes.

Verture delivers the national Adaptation Scotland programme, funded by Scottish Government.

We also run four regional adaptation partnerships: Climate Ready Clyde, Climate Ready Southeast Scotland, Climate Ready Tayside, and Highland Adapts.

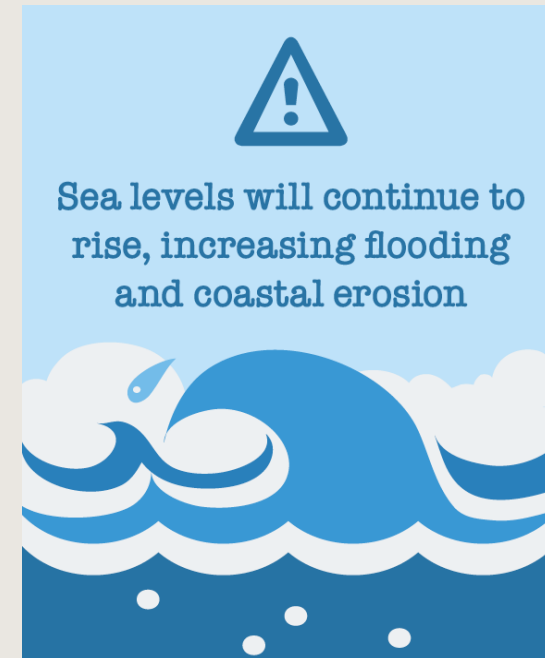


© Verture

Scotland's climate has already changed...

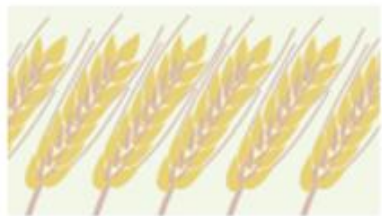
- 10 warmest years on record have all occurred since 1997
- Warmest year on record = 2022
- Annual average rainfall in the last decade 10% wetter than the 1961-1990 average, with winters 29% wetter
- Mean sea level risen by approx. 18.5cm from the start of the 20th century, and rate has increased over the last 30 years
- 60 named storms since 2015

In future...

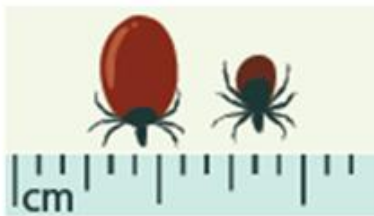


Taken from the Adaptation Scotland Climate Change Projections for Scotland:
<https://adaptation.scot/scotland-and-climate-change/climate-change-trends-and-projections/>





The productivity of our agriculture and forests



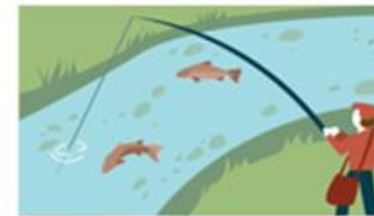
The occurrence of pests and disease



The quality of our soils



The health of our natural environment



The availability and quality of water



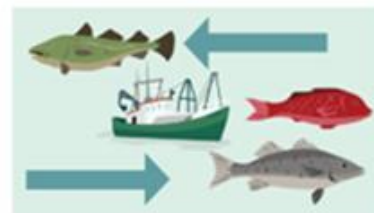
The security of our food supply



The increased risk of flooding



The change at our coast



The health of our marine environment



The resilience of our businesses



The health and wellbeing of our people



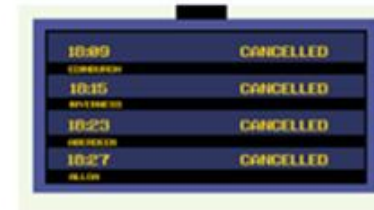
The security and efficiency of our energy supply



The performance of our buildings



Our cultural heritage and identity



Infrastructure – network connectivity and interdependencies

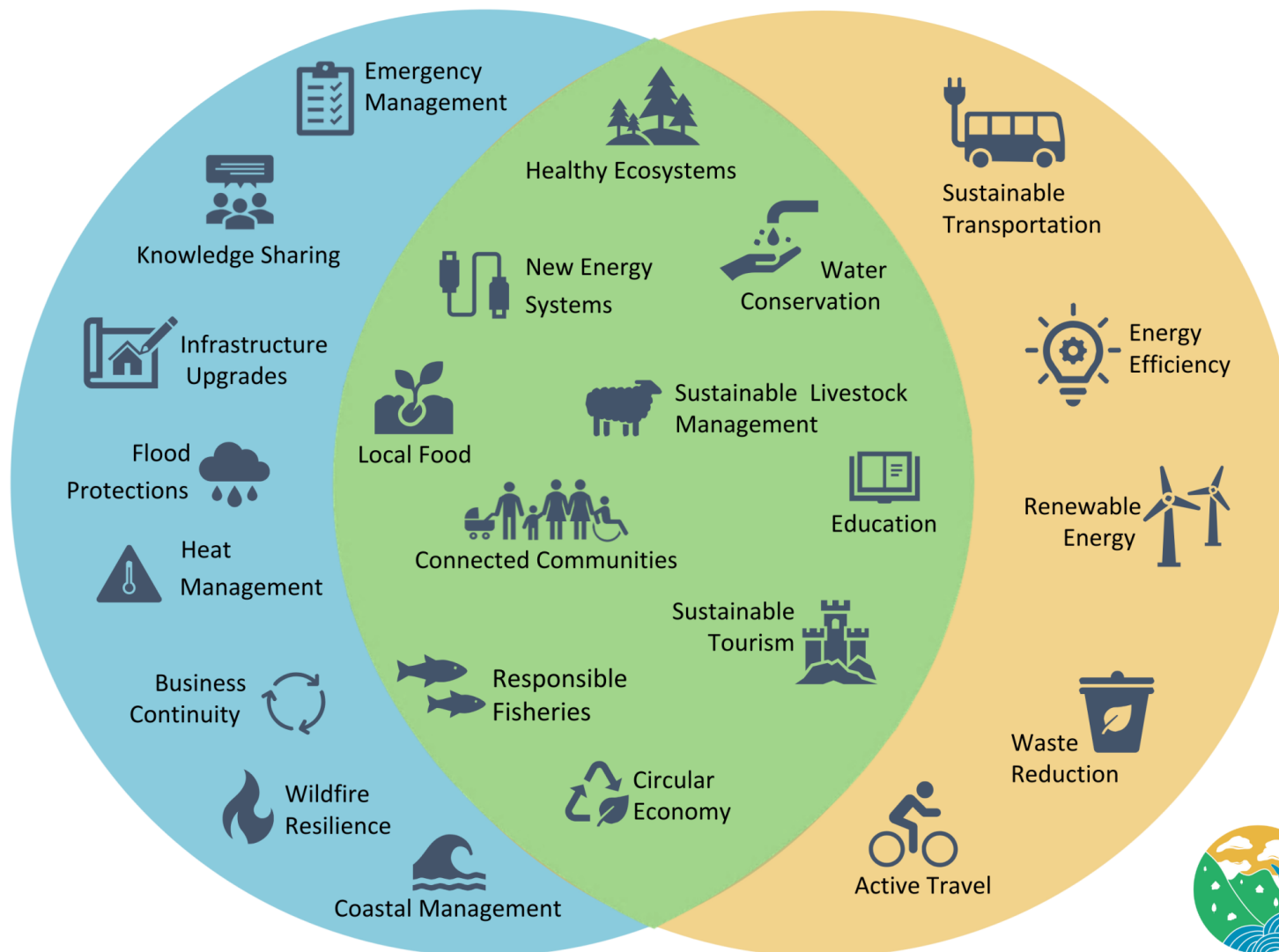
15 key consequences of climate change for Scotland

Adaptation

Actions that manage and reduce the negative impacts of climate change

Mitigation

Actions that reduce the emissions (and other factors) that contribute to climate change



Highland
Adapts

Community Climate Adaptation Routemap

A practical guide for communities
to adapt to climate change.

Adaptation
Scotland
supporting climate change resilience

Adaptation
Scotland
supporting climate change resilience

verture



Scottish Government
Riaghaltas na h-Alba
gov.scot

 **DEVELOPMENT
TRUSTS ASSOCIATION
SCOTLAND**
the community-led regeneration network

 Scottish Communities
Climate Action Network




**HIGHLANDS & ISLANDS
CLIMATE HUB**


NESCAN



Partners

- H&I Hub (Highlands and Islands Climate Hub)
- DTAS (Development Trusts Association Scotland)
- NESCAN Hub (North East Scotland Climate Action Network – Climate Hub)
- SCCAN (Scottish Communities Climate Action Network)



Mapa-lùil Coimhearsnachd airson Freagarrachadh na Gnàth-shìde



Chaidh an goireas seo eadar-theangachadh dhan Ghàidhlig le Comataidh Mòd an Òbain agus le taic bho ABCAN



A route



A map



Every
community
is different.

Our Community
Climate Adaptation
Routemap can help any
community or person
drive their own local
climate action.

Our Community Climate Adaptation Routemap can help...

Local action
groups

Community
councils

Resident
groups

Community
development
trusts

Local
committees



Contents

Introduction	2
Stage 1: Getting started	3
Stage 2: Understanding climate change in your community	4
Stage 3: Taking action	7
Regenerate nature	8
Improve housing and neighbourhoods	9
Support self sufficiency	12
Getting around	14
Grow skills and employment	15
Re-thinking, re-imagining and revitalising	17



Stage 1: Getting started

Preparing for the changes to our weather patterns and more extreme weather events – adapting to climate change – is a collaborative process. It's helpful to understand your capacity and resources first, as later on you will need to decide what actions you can take on your own and where it makes sense to work with others.

Finding out what others in your area are doing in relation to climate change is important. This will help with finding the right partners and funding, and avoid duplication of effort.

First, here are some questions to consider:

- 1 Who are you – what resources do you have as a group?
- 2 Do you have land, buildings or other assets that are/will be affected by climate change?
- 3 What are your main activities and how are these affected by climate change?
- 4 Are any of your existing activities already about adapting to the local impacts of climate change?
- 5 What is your local council already doing about climate change adaptation and resilience? You can [find contact details for your local council here](#).
- 6 Are other groups and organisations in your area already adapting to the local impacts of climate change?



Adaptation
Scotland
supporting climate change resilience



Find a group

If you are not part of a community group at the moment, you could **seek one or build one** by starting or joining existing [Climate Cafés](#), finding [your climate action hub](#), local [Scottish Communities Climate Action Network \(SCCAN\) group](#), your local [Development Trust](#), or [Friends of the Earth Scotland group](#).

You may also be interested to get involved with action networks such as [Climate Camp Scotland](#).



Resourcing your actions

Many of the actions listed in this Routemap can be achieved with people-power and time, however, some specific actions will need funding to achieve.

Scottish Council for Voluntary Organisations (SCVO) [Funding Scotland](#) website is regularly updated, check here for relevant funding by searching keywords such as climate, energy, carbon, transport, active travel, cycling.



Stage 2: Understanding climate change in your community

In this section:

- ◆ What is climate change adaptation and resilience to extreme weather?
- ◆ Learn how your community and place is affected by climate change now and in the future
- ◆ Open up a discussion on which of the effects of climate change are most relevant to your place
- ◆ Do things 'with' not 'to' your community
- ◆ Create a future vision of your community
- ◆ Understand what and who needs to be protected

What is climate change adaptation and resilience to extreme weather?

Climate resilience

Climate resilience is the ability to anticipate, prepare for, and respond to hazardous events, trends, or disturbances related to climate.

Climate change adaptation

Climate change adaptation comprises all the actions and solutions that a country, a region, a city or a community can develop and implement to build more resilient societies and economies, to respond to the impacts of climate change that are already happening or are expected.

It is important to remember that even if we cut all our emissions (by doing things like generating renewable energy and making homes more energy efficient), there are already changes set in motion that we need to prepare for. Therefore both adaptation and mitigation (cutting our emissions) are needed.

Building resilience and adapting to climate change is about becoming better equipped for the present and future changes brought about by global climate change. These include not only physical changes, like higher temperatures, but also indirect changes in how people's health, economic situation, ecosystems and activities may be affected.

Adaptation means different things for different places – in some places it may be about reducing the risk of flooding, and in other places preventing wildfires or reducing impacts of heatwaves. It might mean helping people with climate anxiety, or creating opportunities for skills and work that are rooted in regeneration and revitalisation. In some places it may be about making different land use choices and in others creating a shared pool of resources.

Understanding how your place and community is and will be affected by climate change in the future is important for making good choices today.










Stage 3: Taking action

All communities are different and your group may focus on responding to climate and ecological emergency as a main focus or it may be one of many issues you're dealing with. For this reason it is important that you as a group understand your role in supporting your community to become more resilient to climate change, regardless of your main purpose. There are a number of different actions that a community group can take, depending on your resources and priorities.

In this section you will find many different actions for you and your community to take, organised into the themes below:

- ◆ [Regenerate nature](#)
- ◆ [Improve housing and neighbourhoods](#)
- ◆ [Support self sufficiency](#)
- ◆ [Getting around](#)
- ◆ [Grow skills and jobs](#)

The actions are also tagged with relevant climate hazards and how short or long term the action is.

Action characteristic	Icon	Description
Overheating		Actions you can take as a community group that will help you address local impacts of overheating in buildings. Overheating, particularly in buildings, is a growing health and wellbeing concern in the UK.
Flooding		Actions you can take as a community group that will help you address local impacts of flooding. Flooding is a regular occurrence in Scotland and climate change intensifies it.
Coastal		Actions you can take as a community group that will help you address coastal risks. Scotland's coasts are especially vulnerable to climate change, as they will be affected by changes both to the land and in the sea.
Drought		Actions you can take as a community group to conserve water and reduce water scarcity. Scotland's summers are projected to be drier, with prolonged periods of little or no rainfall, leading to drought.
Extreme weather		Actions you can take as a community group to build resilience to extreme weather events. Occurrences of extreme weather in Scotland are likely to increase with climate change.
Shorter term		These actions are the "lower hanging fruit" that you are likely to be able to do within your community group relatively easily. Usually, they require fewer resources so they can be implemented more quickly.
Longer term		These actions are more complex and may take longer to set up. They usually require wider collaboration, as well as resources such as money, time, or technical input.

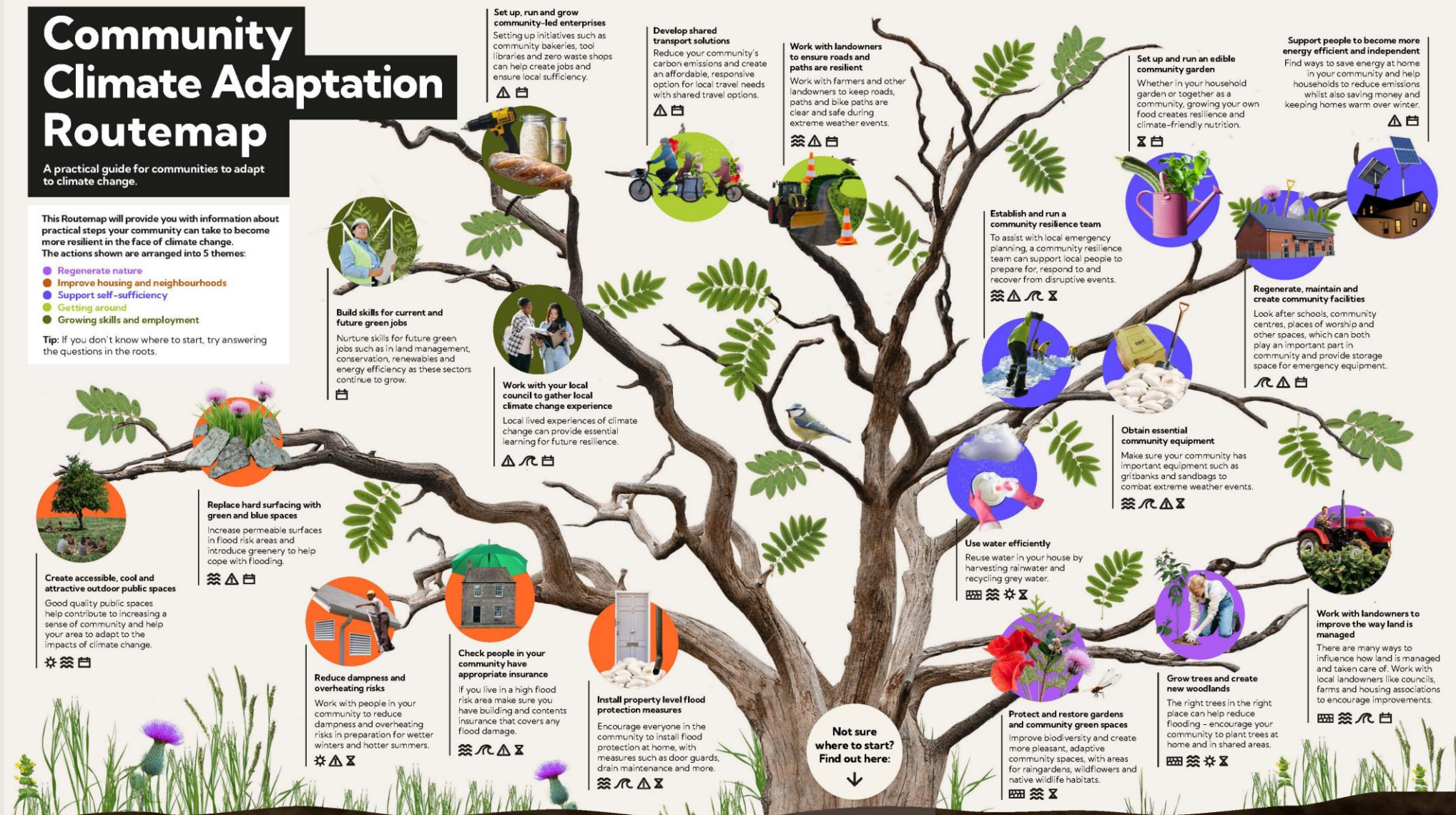
Community Climate Adaptation Routemap

A practical guide for communities to adapt to climate change.

This Routemap will provide you with information about practical steps your community can take to become more resilient in the face of climate change. The actions shown are arranged into 5 themes:

- Regenerate nature
- Improve housing and neighbourhoods
- Support self-sufficiency
- Getting around
- Growing skills and employment

Tip: If you don't know where to start, try answering the questions in the roots.



Not sure where to start?
Find out here:

Start by looking at the resources your group has and what you would like to do: consider what you do, what is happening in your community and how this may be affected by climate change; connect with other groups in your area. Click [here](#) to find out more.

Yes, but we don't know where to start

Are you considering how your place and community can become more resilient in the face of climate change?

Yes, we know what climate change means for us locally but don't know what to do about it

You're in the right place! The tree above details different actions to help your community to become climate ready, adapt and build resilience. As well as the 5 themes shown in the key, there are a few different ways to read the map, depending on what you're most interested in focusing on:

Yes, but we want to understand what climate change means for us locally

Are you looking for near or long term things to do?

Are there specific climate hazards you want to address?

1. Learn what climate change adaptation and resilience

2. Learn how your community and place is affected by climate change now and in the future

3. Open up a discussion on which of the effects of climate change are most relevant to your place

4. Create a future vision of your community

5. Understand what and who needs to be protected

Click [here](#) to find out more.

Within each theme branch, actions have been organised by how short or long-term they are. For short term actions start close to the tree trunk. For longer term actions that require a bit more coordination and resources go further along the branches.

They are also marked by these symbols: Shorter term Longer term

For specific concerns around climate hazards, look out for these symbols:

Flooding Heat Extreme weather Coastal hazards Drought





"For those who haven't yet experienced climate collapse in our own bodies, a history not yet written into us, the feeling it arrives in the shape of shadows, an atmospheric wrongness, and harrowing predictions; these are stories that change our own. The moment we begin to truly engage with climate science, our narratives of self and future are whirled out of orbit."

Jessica Gaitán Johannesson,
The Nerves and Their Endings: essays on crisis and response

Get in touch with us

If you have questions about the Routemap, please get in touch with the Adaptation Scotland programme team via adaptationscotland@verture.org.uk

"[This] is not just about locating fault lines of climate change, or imaging those most impacted by it, but is instead [...] about courageously enacting the principles of a love ethic which is based on showing care, respect, knowledges, integrity, and holding the will to cooperate."

Susannah Haslam and Lou-Atessa Marcellin, **Justice/Love**, in Dani Admiss' **Sunshine Doesn't Need a Pipeline**



Questions to stay with:

- 1 How can we carry out projects that matter in our community in a way that also addresses social and climate justice? What does it mean for our community?
- 2 How can we create space for action that brings both the need for urgent changes and also creates space for building trust and connections in our community?
- 3 What's the smallest, most doable thing we can do to make our community a better place for all creatures, human and not?
- 4 How can we address immediate needs and practical questions while also focusing on longer-term, strategic outcomes?
- 5 How can we connect our organising with others, like migrant action, land right campaigns and others?
- 6 How can we work with and not on behalf of the most vulnerable in our area?
- 7 How can we support communities in the Global South in building their resilience to climate change?

Re-thinking, re-imagining and revitalising our places and communities

There's no one "next step" that would suit all – please use this Routemap in ways that make sense for your community, remix it, make different paths through it, use it to set off on your own path. There are others across Scotland working on climate and social issues and there are many people and organisations who can support you, remember you're not doing this alone. You can use the questions on the right to open up conversations about your local action.



Using the Route Map for Community Led Planning



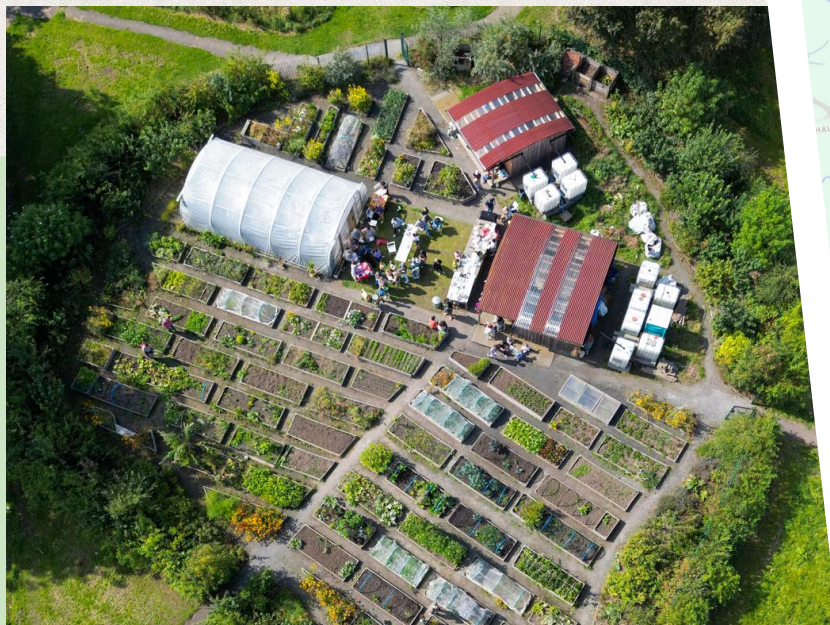
**Edible
Estates**



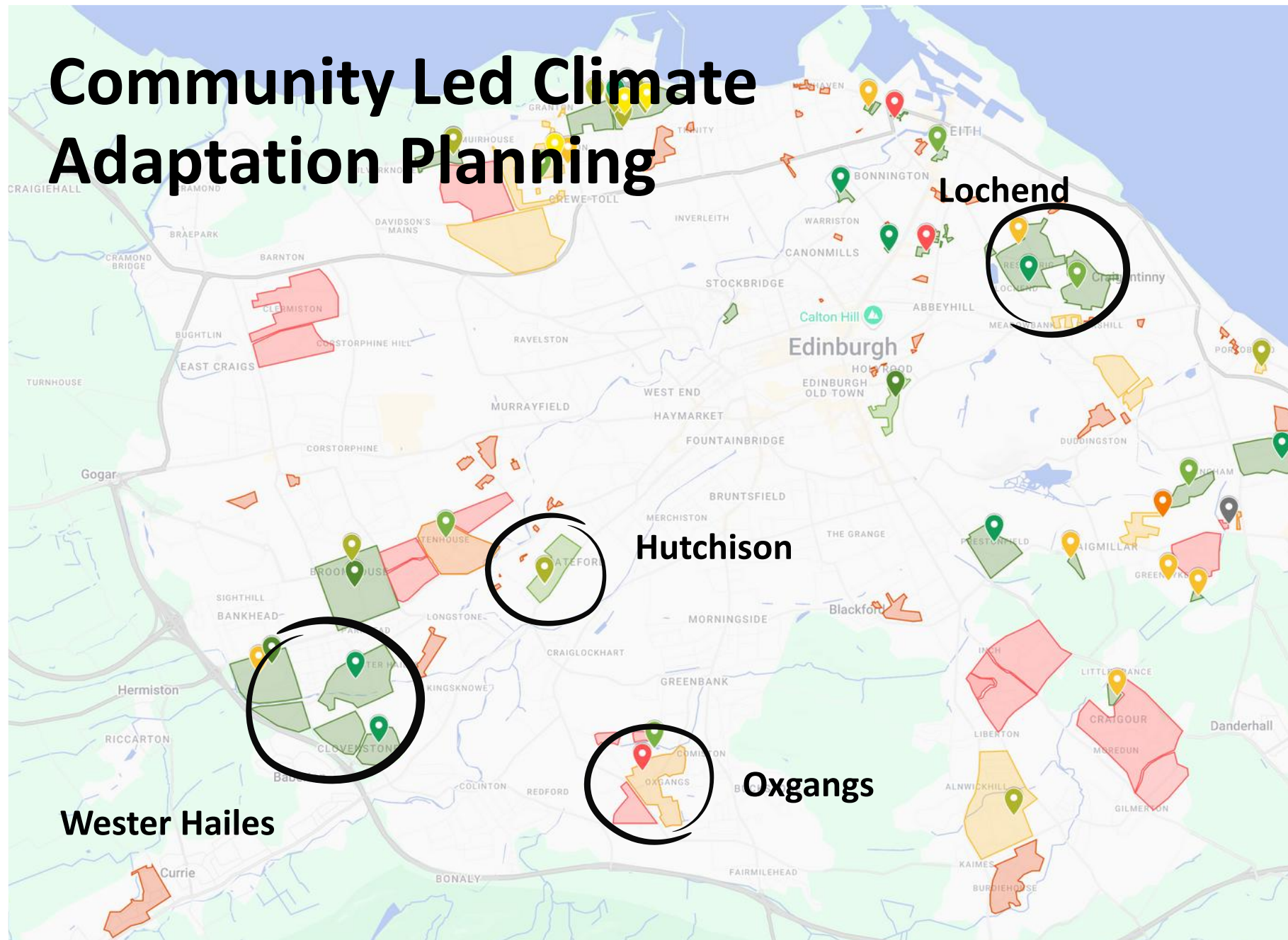
**GROWING
TOGETHER**

greig@edibleestates.scot

www.growingtogether.scot



Community Led Climate Adaptation Planning



Timeline:

Recruit
Community
Researchers

Connect with
other local
organisations

Train community
researchers

More training for
community
researchers

Run workshops
and record
results

Analyse and
organise results

Create local plan



Timeline:

Recruit
Community
Researchers

Connect with
other local
organisations

Train community
researchers

More training for
community
researchers

Run workshops
and record
results

Analyse and
organise results

Create local plan

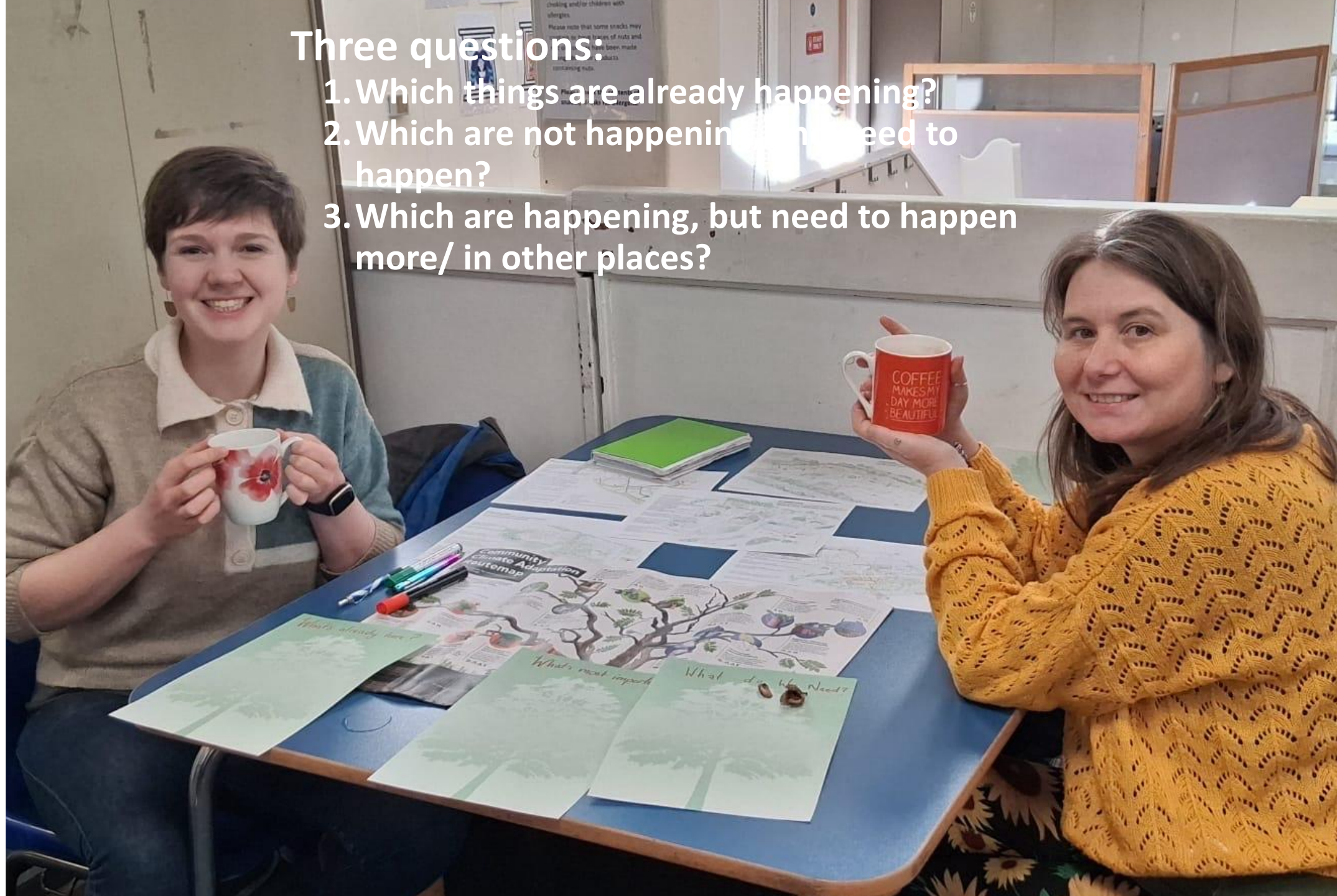






Three questions:

1. Which things are already happening?
2. Which are not happening, and need to happen?
3. Which are happening, but need to happen more/ in other places?



Hutchison Community Climate Adaptation Tree

Education on resilient housing: to reduce energy bills and protect against storm damage

Organise community art projects and murals, clean up graffiti

Reduce supermarket car parks to create green spaces

More nature on pavements: planters, grass, flowers

Education on how to look after the Water of Leith

Plant more trees: especially fruit trees and community orchards

Plant wildflowers and create pollinator corridors

Improve empty grassy areas e.g. a dog park or a sensory garden

Create a community centre or hub which is open to all, and provides shared resources

Organise community litter-picks and educate on fly-tipping

Provide more information on the improvements which are already happening

Install more rubbish bins and dog poo bins

Build a self-service community library and/or noticeboard

Create a voluntary local community response team to clean up and support vulnerable people during extreme weather

Revive the community council

Organise a Hutchison gala day or festival

Improve cycle infrastructure: more cycle lanes, better cycle lanes and secure bicycle sheds

Ensure public transport links are still available during snow or storms

Improve access to Water of Leith from Asda: this path is currently impassable for bikes, wheelchairs and buggies

Prevent road flooding: install permeable paving and improve drainage

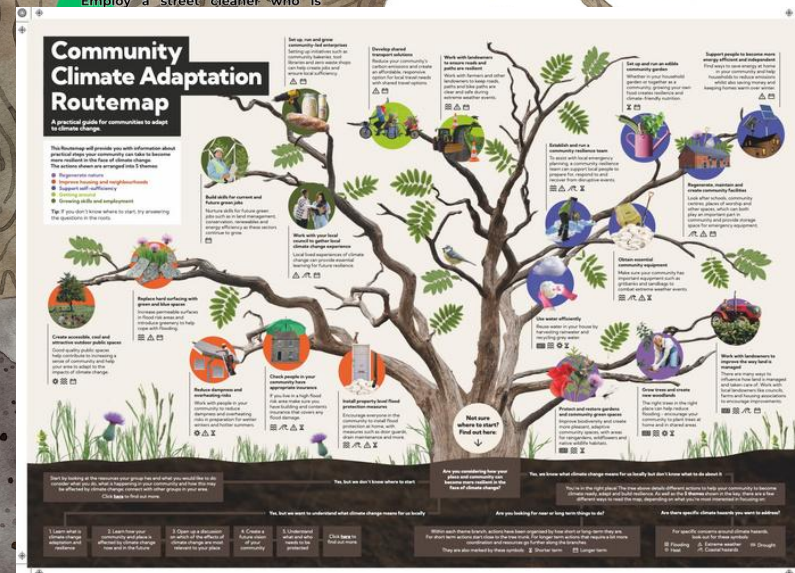
Share resources: establish a tool library and clothes swap events

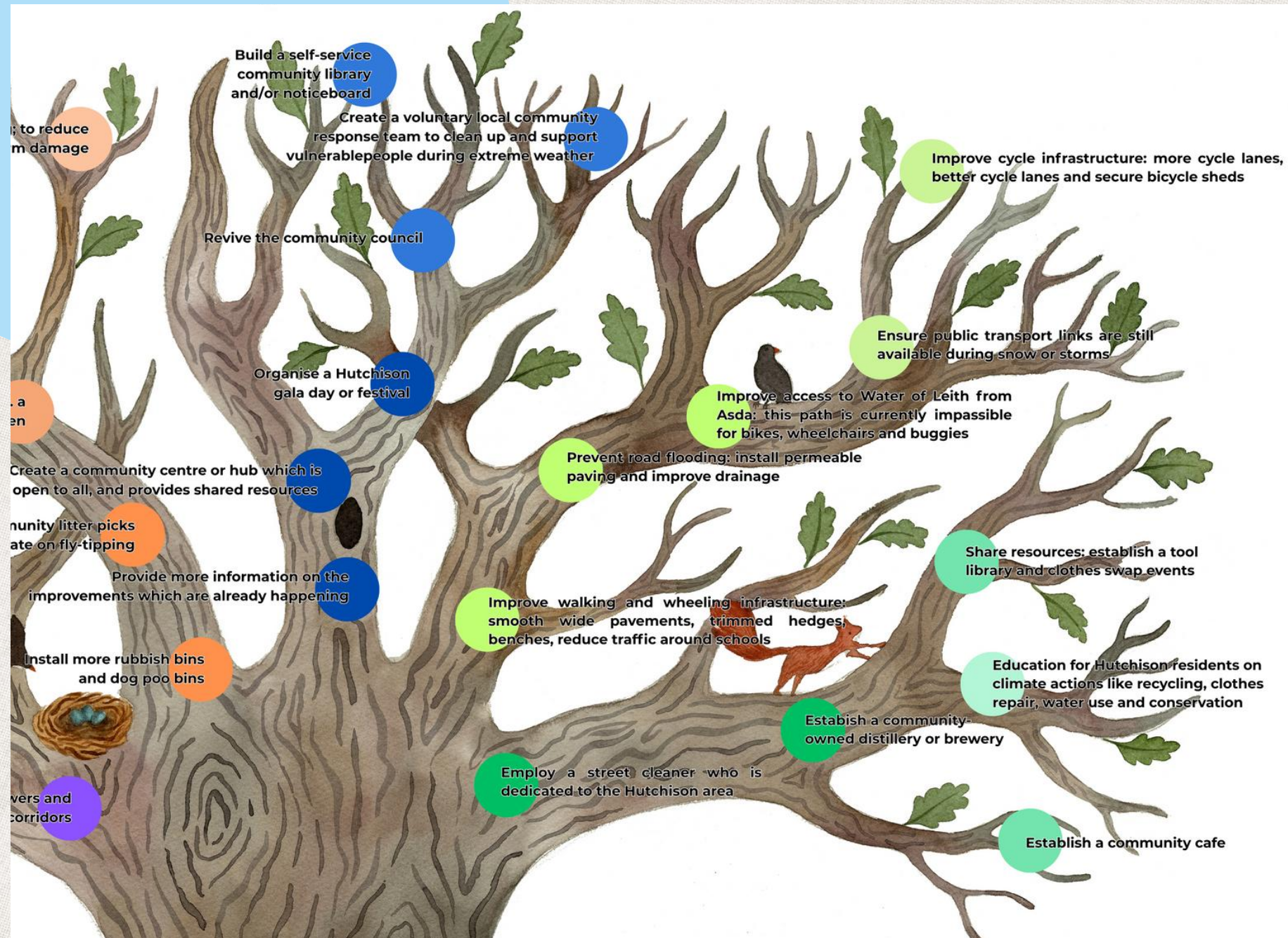
Education for Hutchison residents on climate actions like recycling, clothes repair, water use and conservation

Establish a community-owned distillery or brewery

Employ a street cleaner who is

Improve walking and wheeling infrastructure: smooth wide pavements, trimmed hedges, benches, reduce traffic around schools


**Edible
Estates**
GROWING
TOGETHER



Any questions?

Sarah McArthur, Community Research + In-depth Journalism

Sarah.mcarthur346@gmail.com

Greig Robertson, Edible Estates

Greig@edibleestates.scot



Growing skills and employment

As a community group you can work on creating more opportunities for good, local jobs that will be important both for Just Transition (away from fossil fuels) and ensuring people have the right skills to work in the changing climate. As society transitions towards a greener future, the skills needed will be different and there will be new opportunities for work in different sectors, for example renewable energy, sustainable farming, bike and electric vehicle mechanics, and foresters. These are sometimes referred to as "green jobs".

Growing skills and employment actions:

- ◆ **Work with your local council to gather local climate change experience**
- ◆ **Build skills for current and future green jobs**
- ◆ **Set up, run and grow community-led enterprises**

Support self sufficiency

As a community group you can work on increasing your community's self-sufficiency, resilience and sense of community to be better prepared for climate change and be more quick and effective with your responses.

Support self sufficiency actions:

- ◆ **Use water efficiently**
- ◆ **Establish and run a community resilience team**
- ◆ **Obtain essential community equipment**
- ◆ **Set up and run an edible community garden**
- ◆ **Regenerate, maintain and create community facilities**
- ◆ **Support people to become more energy efficient and independent**

Group discussion

- Choose a theme: ♦ [Support self sufficiency](#) or ♦ [Growing skills and employment](#)
- 5 mins reading time - look in further detail at the actions listed within your theme
- Discuss:
 - In your theme, what opportunities are there – perhaps through your existing activities – to improve climate resilience in your communities?
 - Are there any other actions you could take?



25 minutes + 10 minutes feedback



Get in touch!

If you have questions about the
Routemap, please get in touch
with
the Adaptation Scotland
programme team at:
adaptationscotland@verture.org.uk

Or email us directly

Alex
alex@verture.org.uk

Eleanor
eleanor@verture.org.uk

Adaptation Scotland

supporting climate change resilience



adaptationscotland@venture.org.uk



adaptation.scot



Scottish Government
Riaghaltas na h-Alba
gov.scot

The Adaptation Scotland programme is funded by the Scottish Government and delivered by Scottish charity Venture

venture

